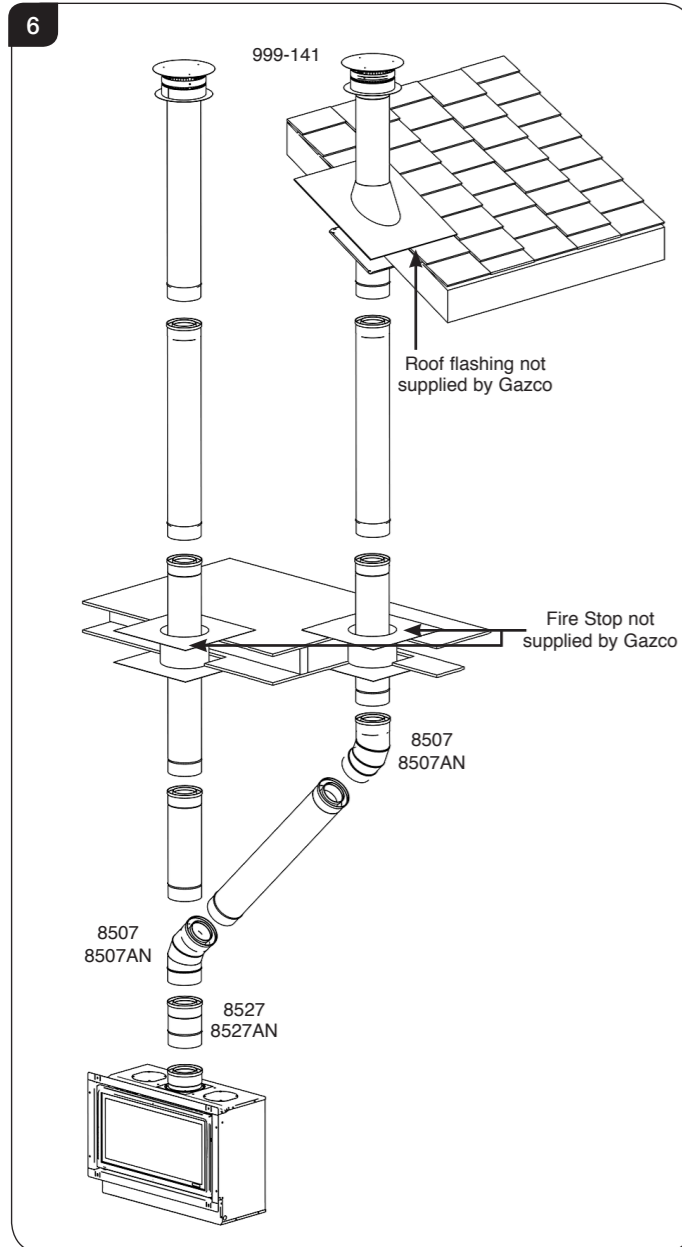


Flue Options continued...

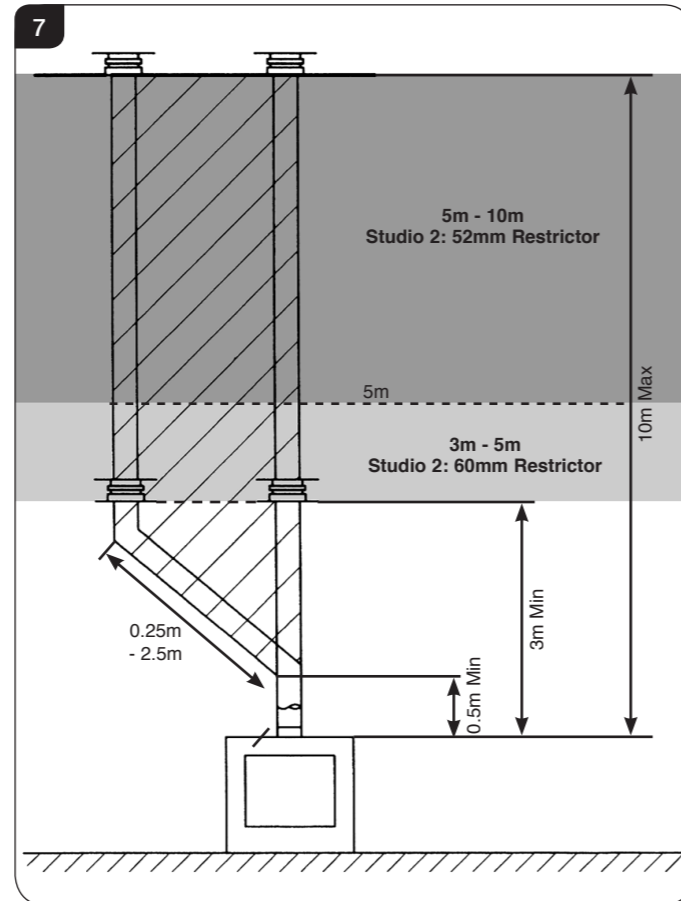
2C Top Flue Vertical Kit (8524/8524AN)

Vertical from the top of the appliance, see Diagram 6.
A minimum vertical rise 3m to a maximum 10m. The basic kit comprises:
2 x 1m lengths
1 x 1m terminal length
1 x 52mm restrictor
1 x 47mm restrictor
1 x 60mm restrictor
1 x 70mm restrictor
Extra lengths may be added from the table.



2D Top Flue Vertical Offset Kit (8530/8530AN)

Used with kit 8524. A minimum rise of 500mm is required to the first bend, see Diagram 7.



Pipe Length	Stainless Steel Finish	Anthracite Finish
200mm	8527	8527AN
500mm	8528	8528AN
1000mm	8529	8529AN



Fire Your Imagination

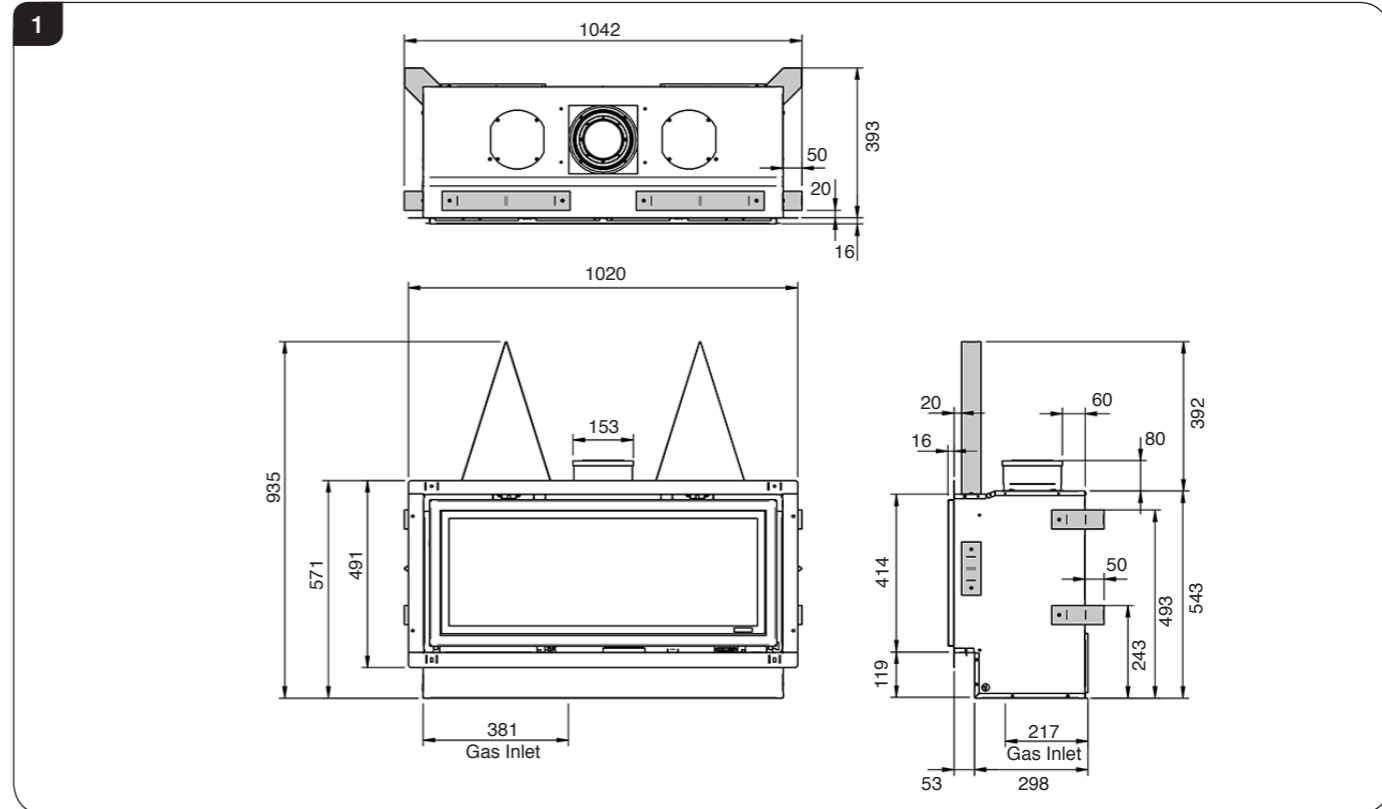
PR2119 AU Info Sheet Issue 1 (November 2014)



Glass Fronted Studio Balanced Flue (AU)
Information Sheet for Builders & Designers

IMPORTANT
This Information Sheet is intended as a reference guide for minimum cavity and flue requirements when installing a Gazco Studio appliance only and not a substitution for the full instruction manual. It is essential to read and fully understand the installation instructions (PR2116) before undertaking this project.

Appliance Information



Technical Specifications	Studio 2
Studio Natural Gas with Logs	8701BFLECAU
Studio Propane Gas with Logs	P8701BFLECAU
Gas Input	30MJ/h
Minimum Supply Pressure	1.13kPa Natural Gas 2.75kPa Propane Gas
Gas Inlet Connection	8mm with 1/2" BSPT Adapter
Lining Options	Black Reeded or Vermiculite Lining
Frame Options	Edge Kit, Cool Wall Kit, Profil, Bauhaus, Steel2, Glass, Verve
Materials Required	
Heat Tolerant Non Combustible 12mm Board	12mm Supalux or 12mm Promotec H
Gazco Balanced Flue	Refer to installation instructions PR2116
Air Replacement	
Cavity Ventilation Area (min)	Decorative Frame or Edge finish: 2 x 50mm ² Cool Wall finish: 1 x 200mm ² (or 2 x 100mm ²)

Distributed by



The Fireplace
0800 843 347 | 0800 The Fire
www.thefireplace.co.nz



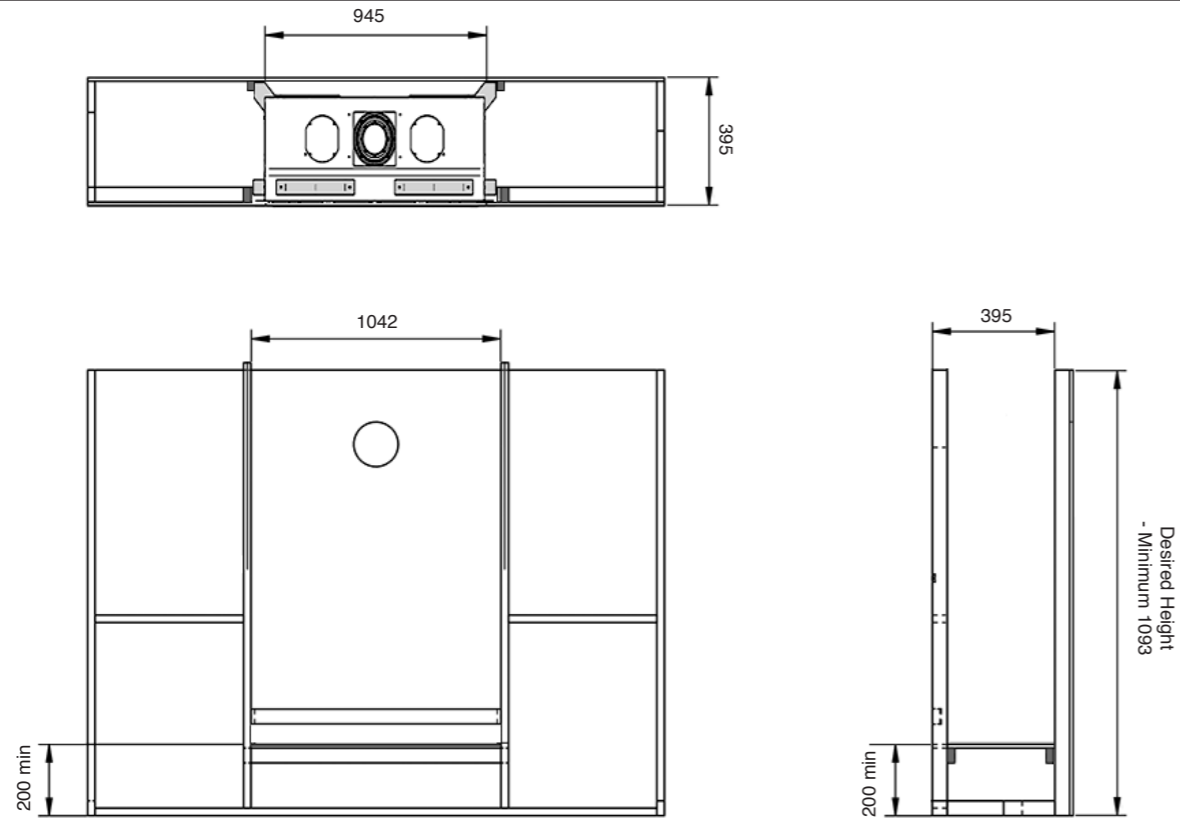
Appliance Location & Framing Details

- The appliance can be installed in a timber frame out.
- The following details are the absolute minimum required based on using 90 x 45 framing.
- The following dimensions are based on wall finishing using 12mm Heat Resistant board that complies with the AS/NZS 2918:2001 definition - recommended brand Supalux, Promtect or Hebel etc.

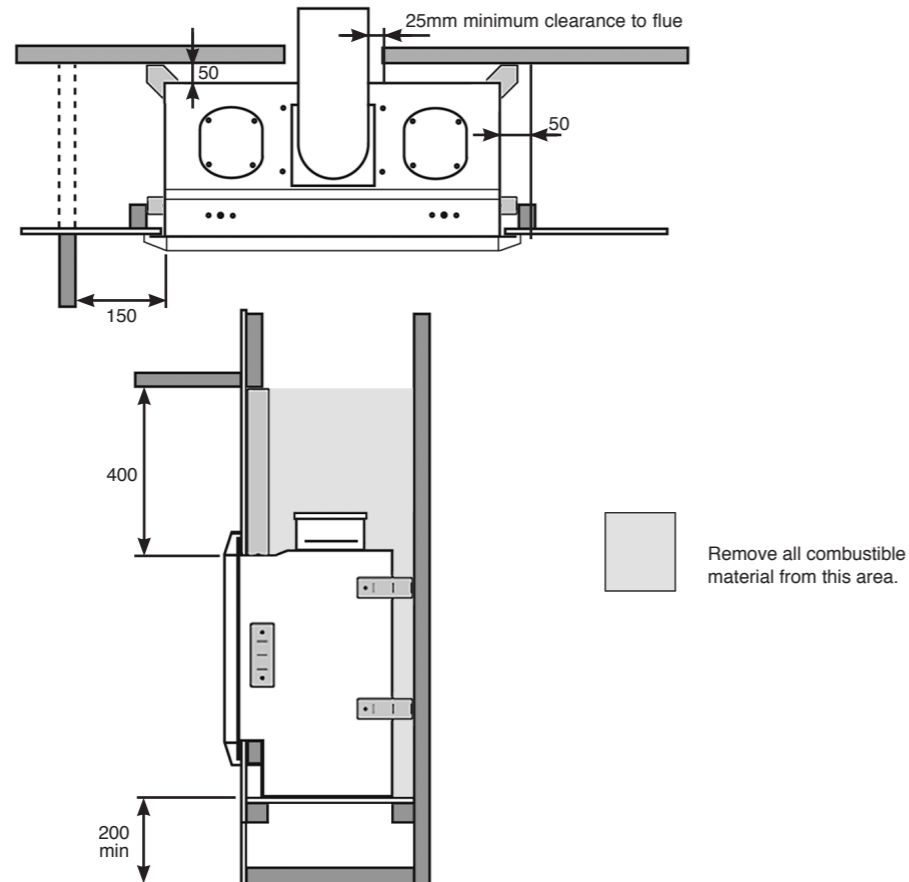
There are 3 methods of stud work installation:

1. **Decorative Frame** - Timber framing details for the Studio with a selected frame (refer fig 1 & 2).
2. **Edge** - Framing details for the Studio with additional Studio Edge kit (without frame).
3. **Cool Wall** - Framing details for the Studio with the additional Studio Cool Wall kit.

2



3



Flue Options

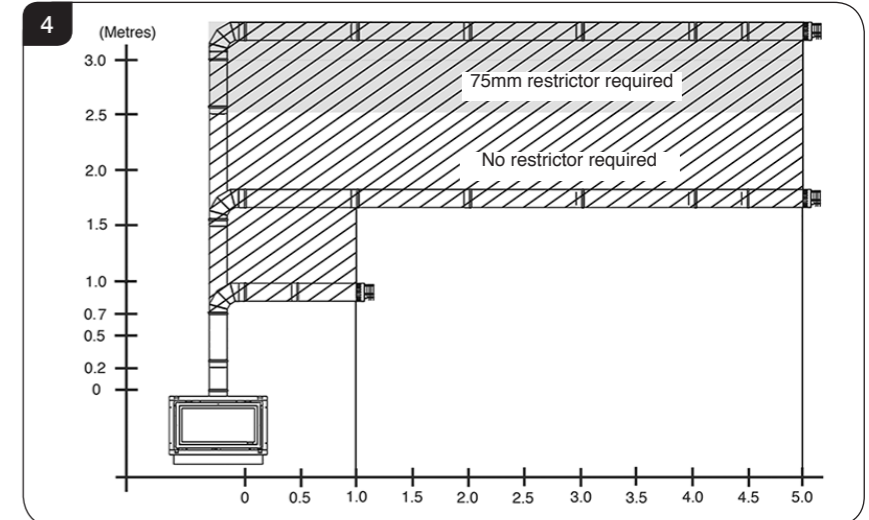
2A. Top Flue Up and Out Kit

Start of bend to centre line of horizontal flue 170mm. Centre line of vertical flue to end of bend 220mm. Vertical from the top of the appliance then horizontally out, see Diagram 4.

STUDIO 2 BF (8509/8509AN)

- 1 x 200mm vertical length
- 1 x 500mm vertical length
- 1 x 500mm terminal length (cut to length on site)
- 1 x 90° elbow
- 1 x wall plate
- 1 x 75mm restrictor

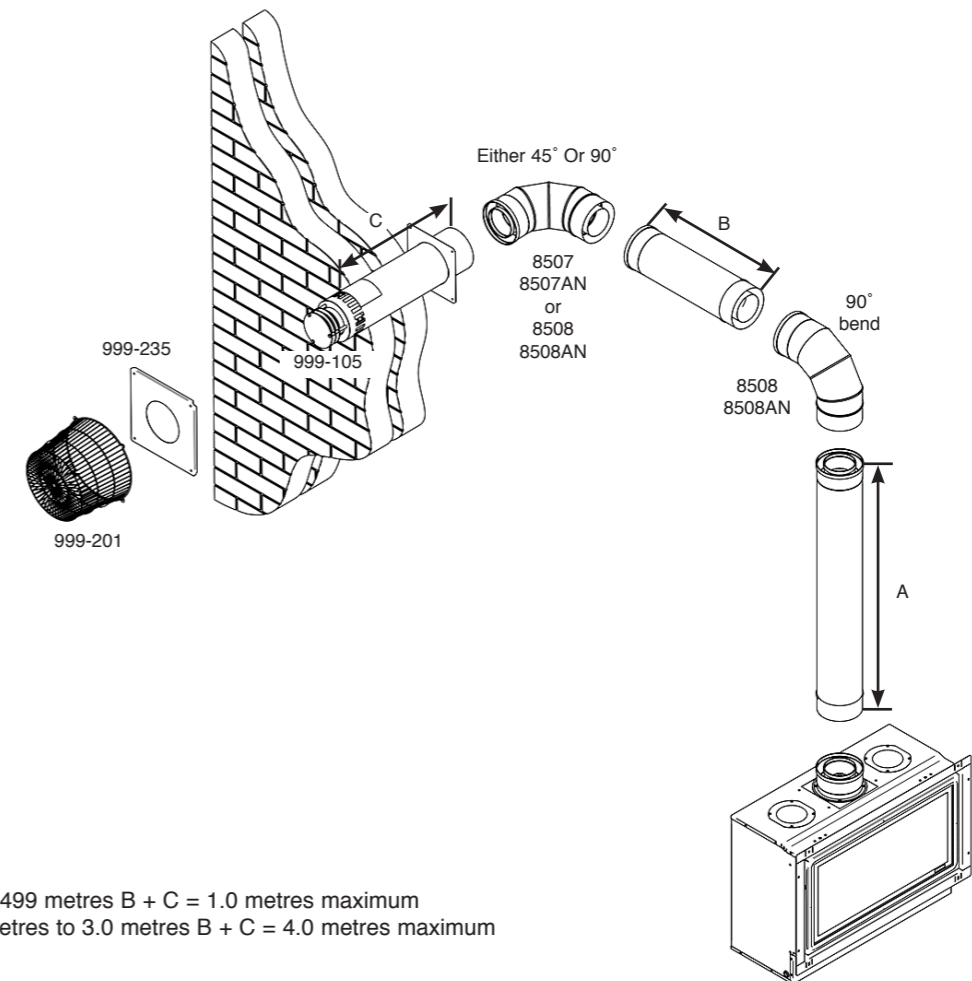
The kit may be used on its own.
Extra lengths may be added to the vertical and horizontal from the table, see Section 3.



2B. Top Flue Up and Out with Additional Bend

An additional bend may be used on the horizontal section (either 45° or 90°), but the overall horizontal flue run will be reduced, see Diagram 5.

5



Flue Clearances

Minimum Flue Clearances to Combustibles

- To the sides and undersides: 25mm
- Above the flue: 75mm